



EXHIBITION BROCHURE 2022





# Exhibition FACT SHEET

With eight prime exhibition courts and various advertising mediums, we offer you the ideal opportunity to showcase your product or service.

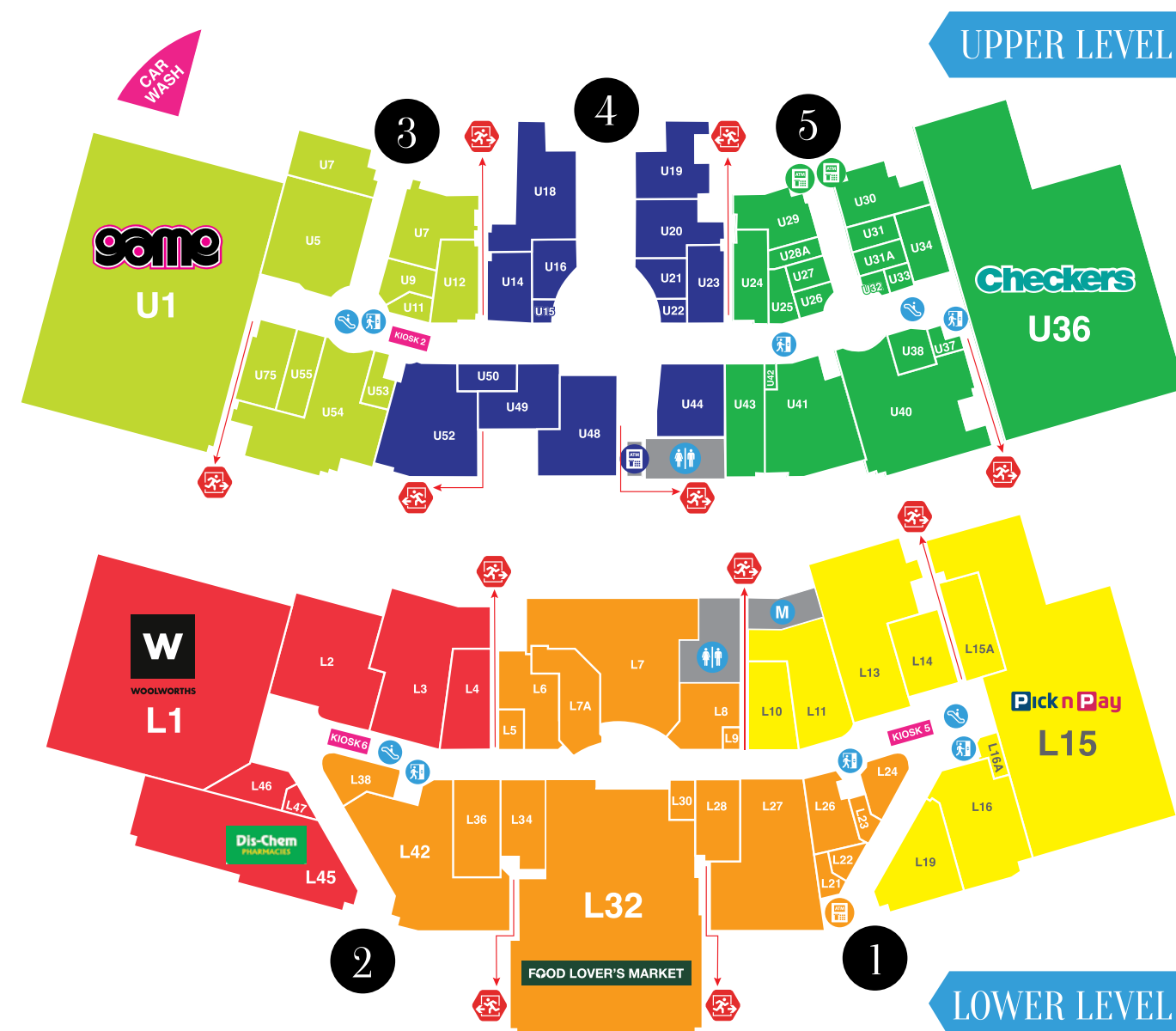
The stylish and well positioned shopping centre with a total letting area of 35 266m<sup>2</sup> offering over 70 stores is situated just off Saldanha Road making it an easy and convenient stop on the rim of Vredenburg. The Mall has 5 entrances, 3 lifts and 4 escalators. Weskus Mall has an average of 370 000 feet per month.

## CONTACT

**Joanne Bester**  
**T:** 022 703 6900  
**C:** 078 702 6662  
**E:** marketing@weskus-mall.co.za

## CATCHEMENT AREAS

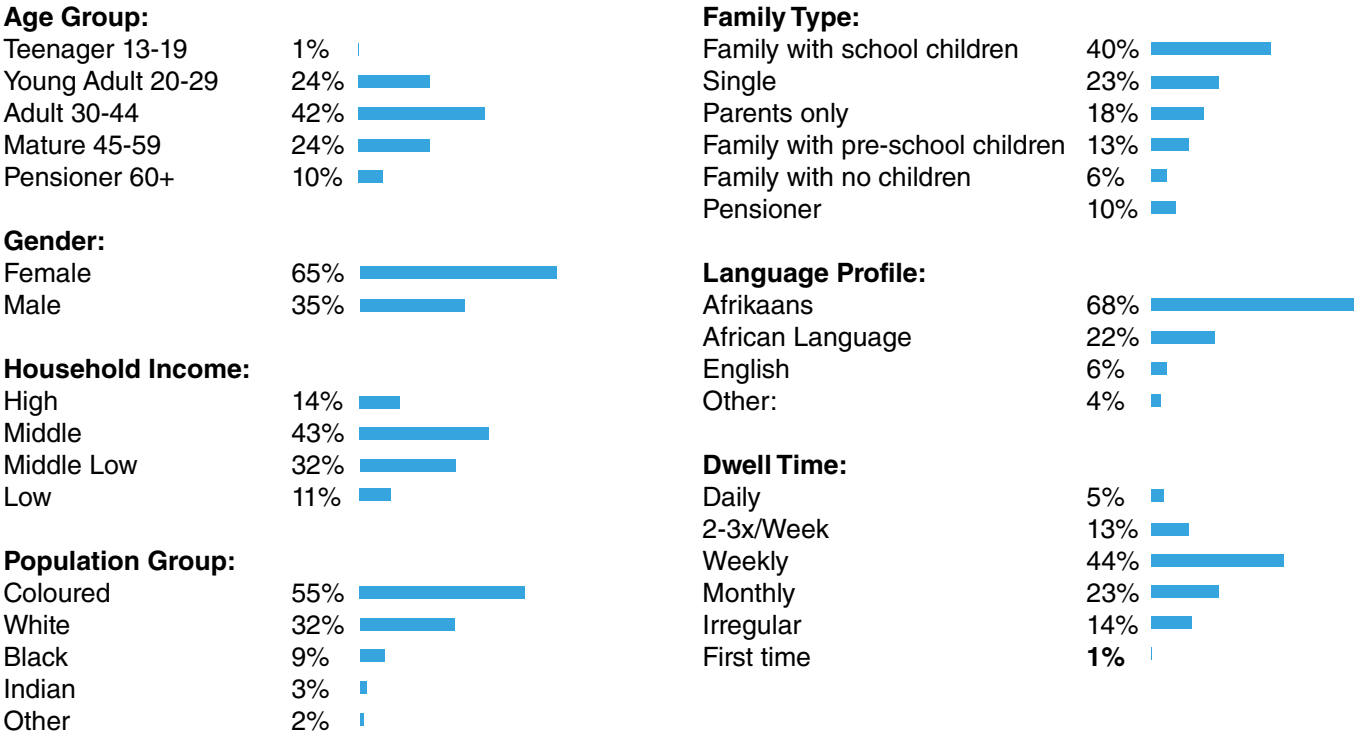
|                      |        |
|----------------------|--------|
| <b>Vredenburg</b>    | 1.9km  |
| <b>Jacobsbaai</b>    | 12km   |
| <b>Saldanha</b>      | 12.5km |
| <b>Langebaan</b>     | 20km   |
| <b>Hopefield</b>     | 37.4km |
| <b>St Helena Bay</b> | 17.7km |
| <b>Paternoster</b>   | 14.7km |
| <b>Veldrif</b>       | 21.7km |
| <b>Laaiplek</b>      | 21.7km |
| <b>Piketberg</b>     | 72.2km |
| <b>Moorreesburg</b>  | 68km   |
| <b>Yzerfontein</b>   | 51.8km |
| <b>Lamberts Bay</b>  | 95.8km |



**Address:** 110 Saldanha Road, Vredenburg, 7380  
**Telephone:** 022 703 6900  
**GPS:** S: 32° 55'08,88 E: 17° 59'17,81  
**GLA:** 35,266m<sup>2</sup>  
 5 Entrances  
 2 Levels – 3 Lifts & 4 Escalators  
 Free Parking  
**Anchor Tenants:** Checkers  
 Game  
 Woolworths  
 Pick 'n Pay  
**Trading Hours:** Monday to Friday 09h00 to 18h00  
 Saturday 09h00 to 17h00  
 Sunday 09h00 to 14h00  
 Extended hours traded in December  
**Average Foot Traffic:** 330,000 feet per month  
**Average Spend/Head:** R210  
**Owner:** Capital Propfund (Pty) Ltd  
**Managed By:** Broll Property Group  
**Website:** [www.weskus-mall.co.za](http://www.weskus-mall.co.za)  
**Facebook:** Weskus Mall



# SHOPPER profile



# Advertising RATES

| Indoor Advertising Rates (2021)           | Monthly Rate            |
|---|-------------------------|
| Digital Big Screen (weekdays 09:00-21:00) | Please enquire for cost |
| (A0) 1189 mm x 841mm (snapper frame)      | R 540                   |
| (A1) 594 mm x 841 mm (snapper frame)      | R 362                   |
| (A2) 420 mm x 297 mm (dustbin frame)      | R300                    |
| (A4) 210 mm x 297 mm (snapper frame)      | R 178                   |
| Escalator Entrance 1 & 2                  | R 3500                  |



Digital Big Screen



A4 Snapper Frame



A1 Snapper Frame



A2 Dustbin Frame



A0 Snapper Frame



Escalator Entrance 1 & 2

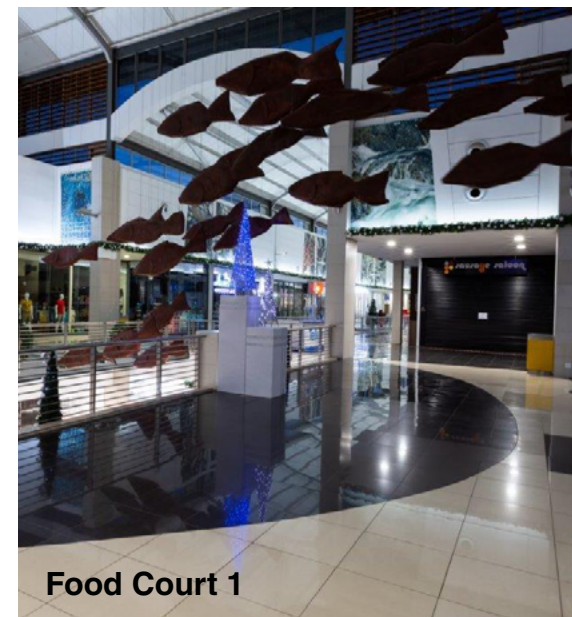


Customers respond best to value offerings.



# Exhibitions RATES

| Court Area   | Court Size | One day only | Weekend Rate<br>Fri - Sun | 7 Day Weekly Rate | 14 Days or more<br>(15% discount on weekly rate) |
|--------------|------------|--------------|---------------------------|-------------------|--|
| Checkers     | 12 sq. m   | R1166        | R3305                     | R5753             | Please Enquire                                   |
| Woolworths   | 9 sq. m    | R1036        | R2958                     | R5118             | Please Enquire                                   |
| Pick n Pay   | 9 sq. m    | R1166        | R3305                     | R5753             | Please Enquire                                   |
| Skywalk 1    | 3 sq. m    | R1080        | R3062                     | R5292             | Please Enquire                                   |
| Game         | 6 sq. m    | R1036        | R2958                     | R5118             | Please Enquire                                   |
| Food Court 1 | 35 sq. m   | R1036        | R2958                     | R5118             | Please Enquire                                   |
| Food Court 2 | 6 sq. m    | R1036        | R2958                     | R5118             | Please Enquire                                   |
| Food Court 3 | 6 sq. m    | R1036        | R2958                     | R5118             | Please Enquire                                   |



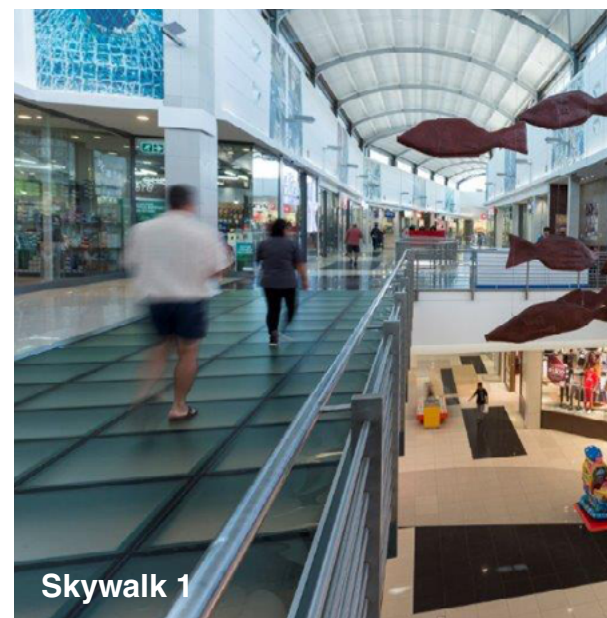
Food Court 1



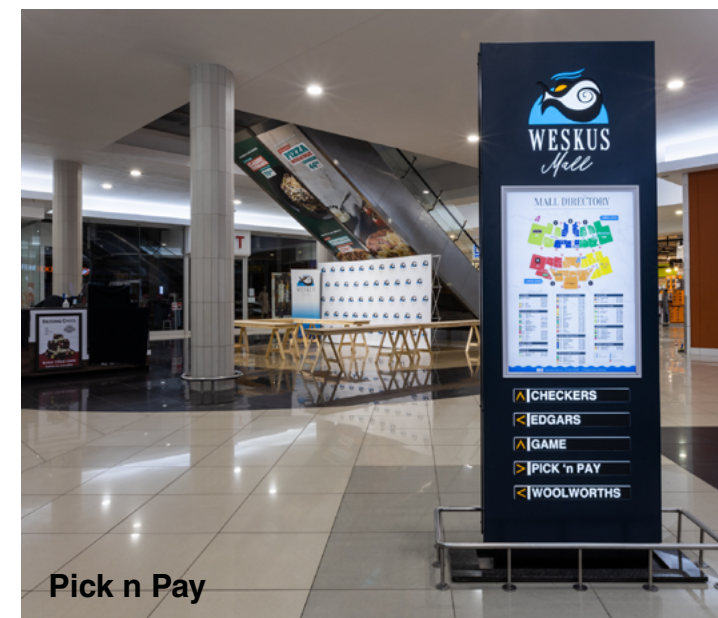
Food Court 2



Checkers



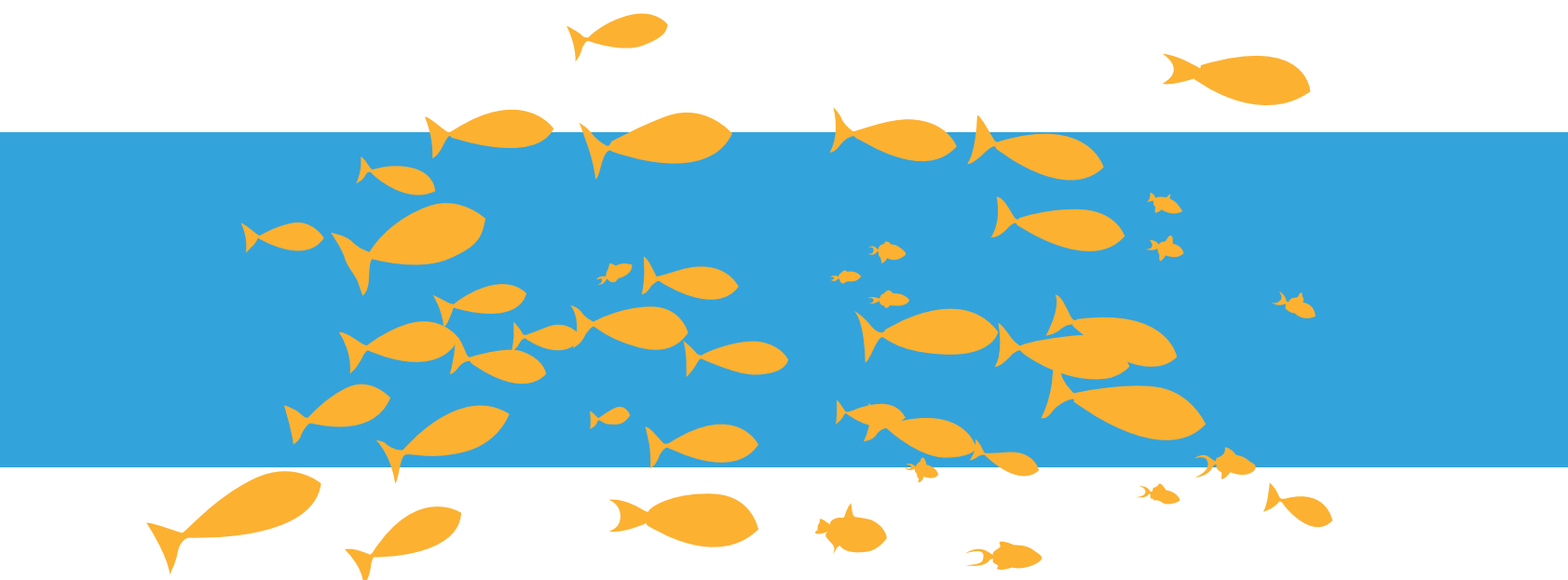
Skywalk 1



Pick n Pay

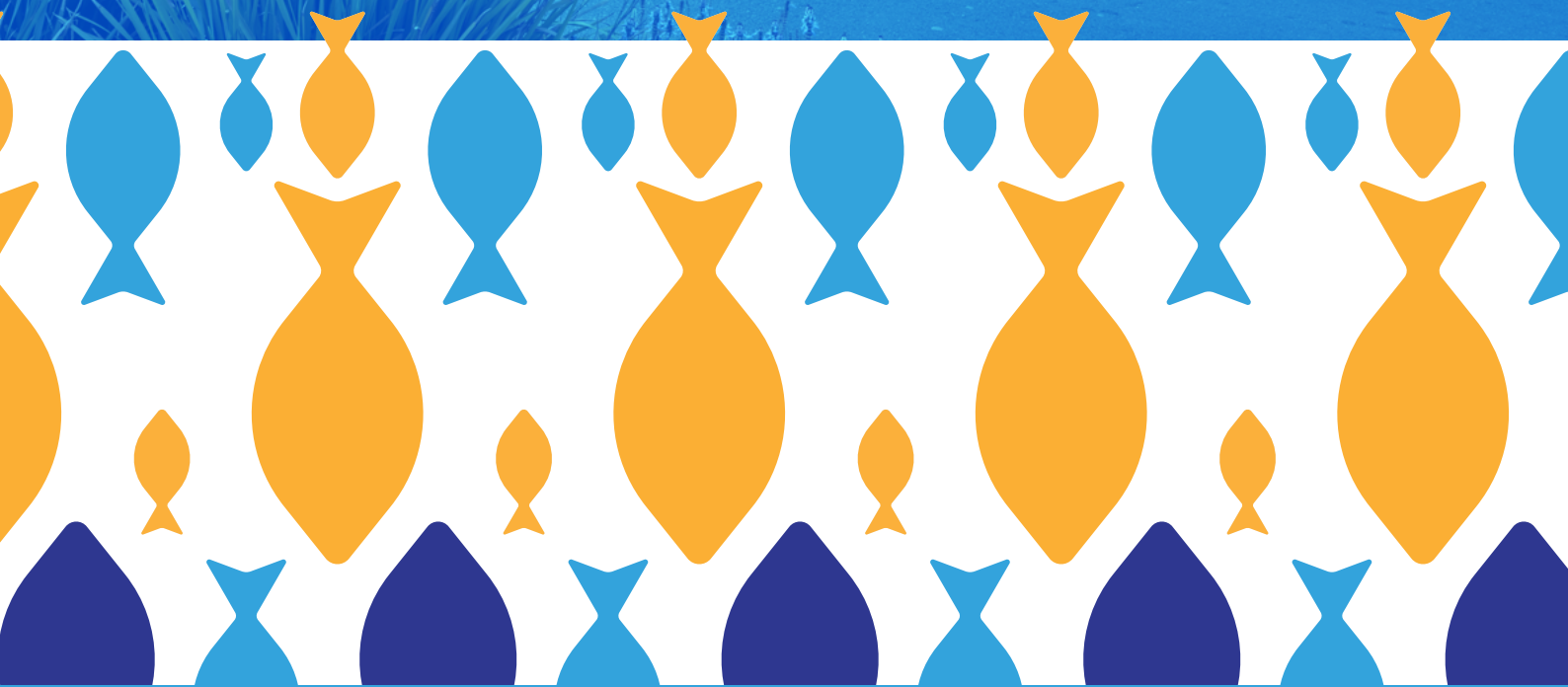


Game



Woolworths





Visit: [www.weskus-mall.co.za](http://www.weskus-mall.co.za) for more information  
Tel: 022 703 6900 | 110 Saldanha Road, Vredenburg, 7380, South Africa